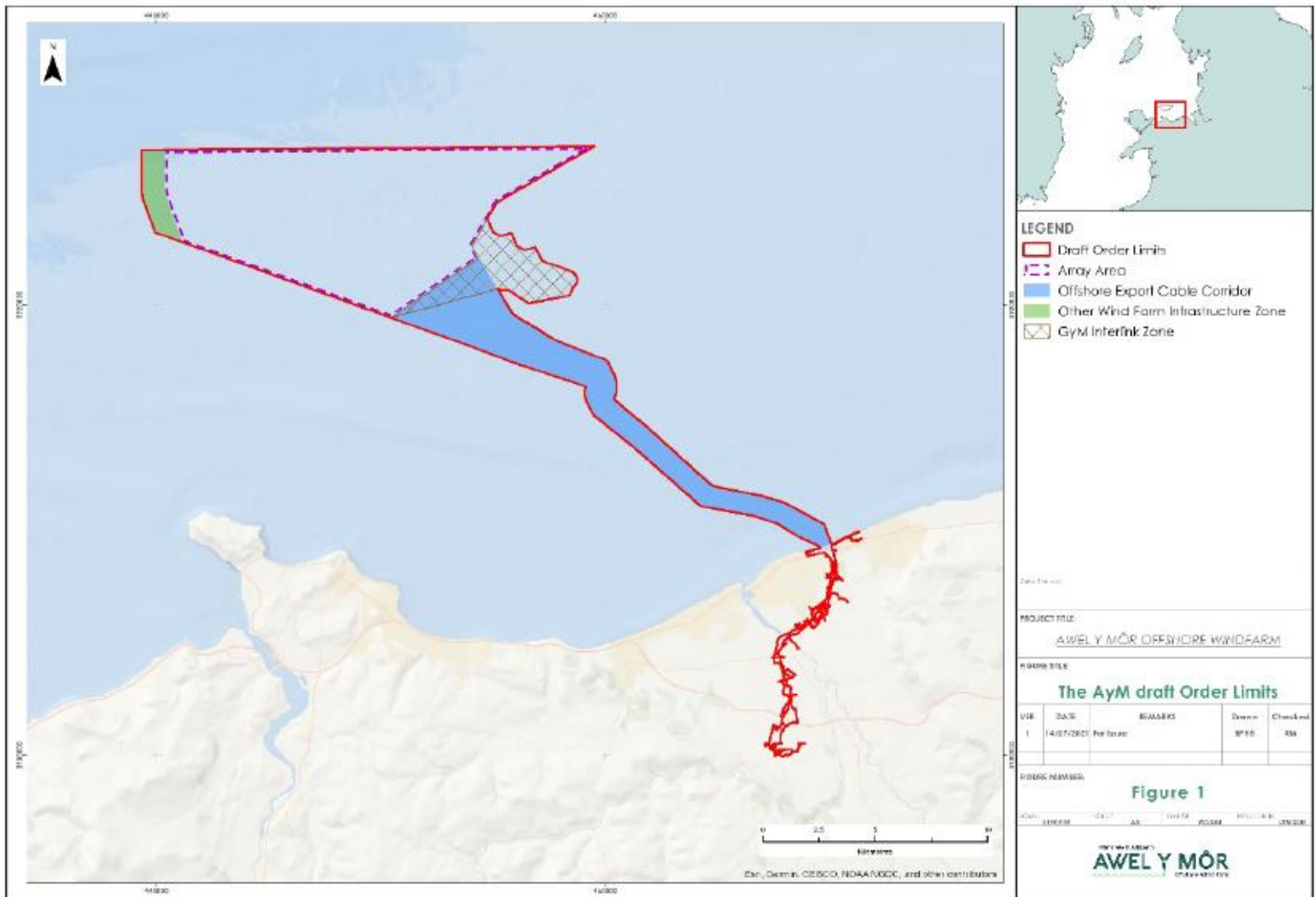


Awel y mor offshore windfarm

Statutory pre-application consultation

The background of the slide features several thick, light grey wavy lines that flow from the bottom right towards the center, creating a sense of movement and depth.

Eitem Agenda 8 / Agenda Item 8



Eitem Agenda 8 / Agenda Item 8



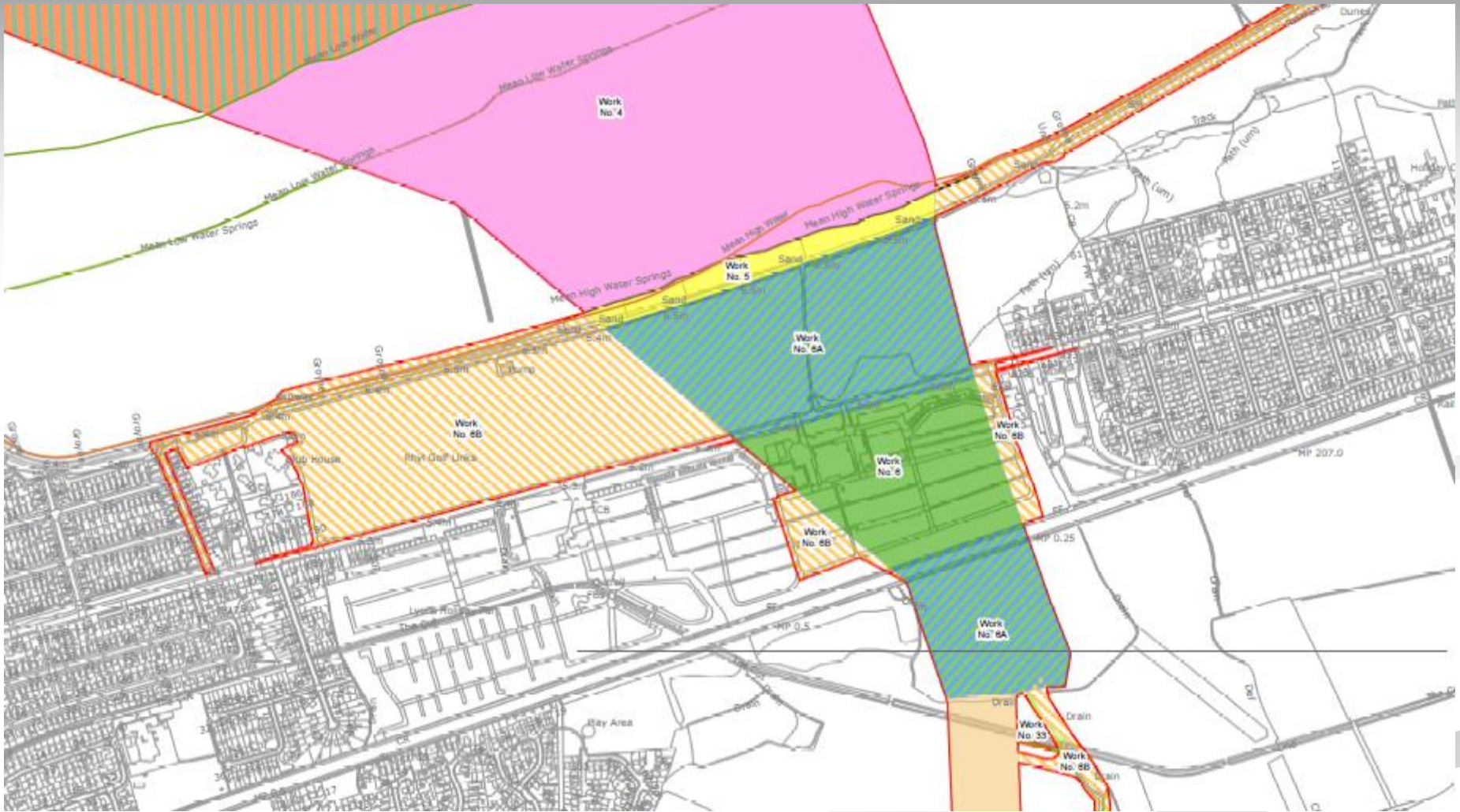
Proposed onshore cable route

Eitem Agenda 8 / Agenda Item 8



Proposed substation site

Eitem Agenda 8 / Agenda Item 8



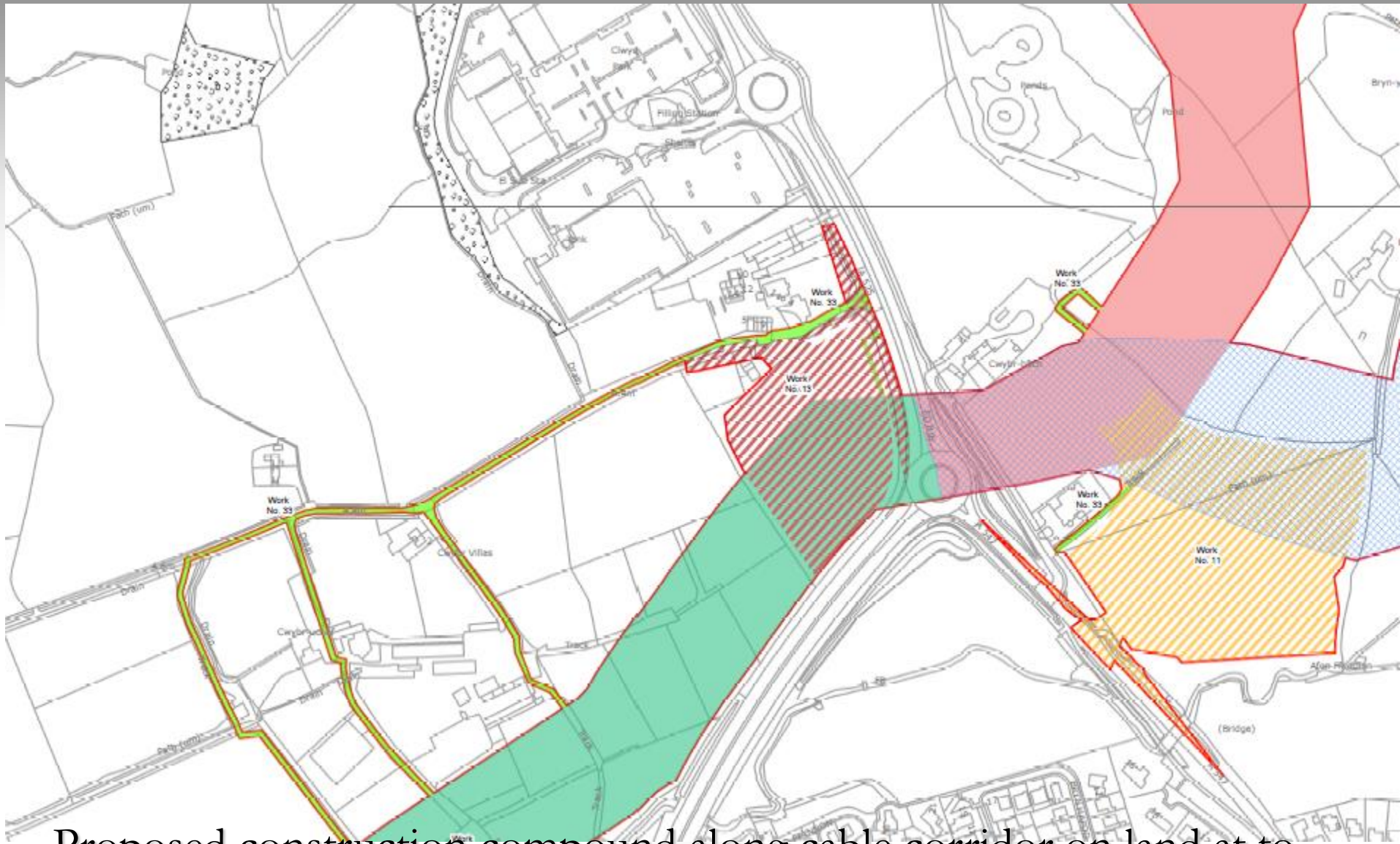
Proposed landfall location at Rhyl Golf Club

Eitem Agenda 8 / Agenda Item 8



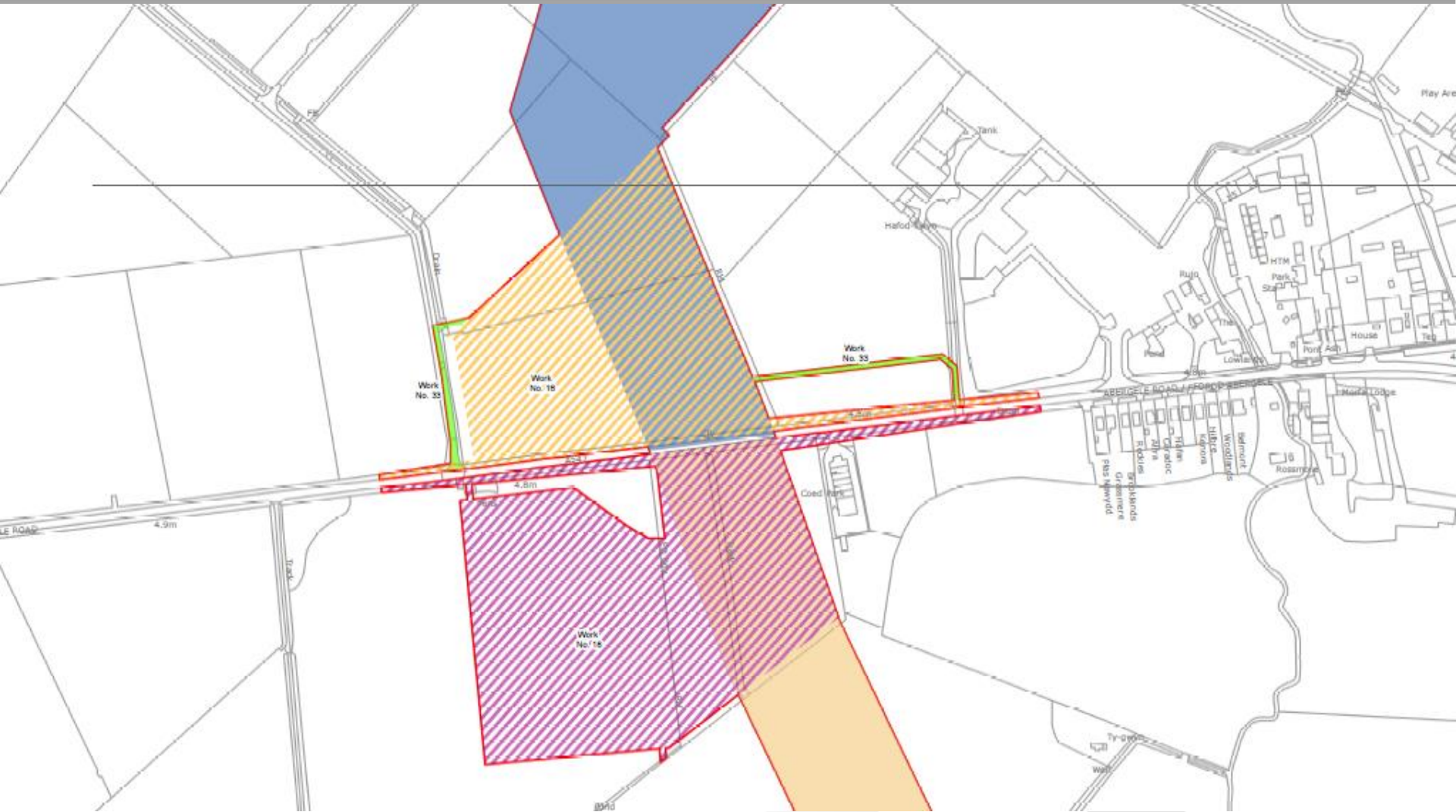
Proposed construction compound along cable corridor on land along B5119 Dyserth Road south-east of New Pines Holiday Park, Rhyl

Eitem Agenda 8 / Agenda Item 8



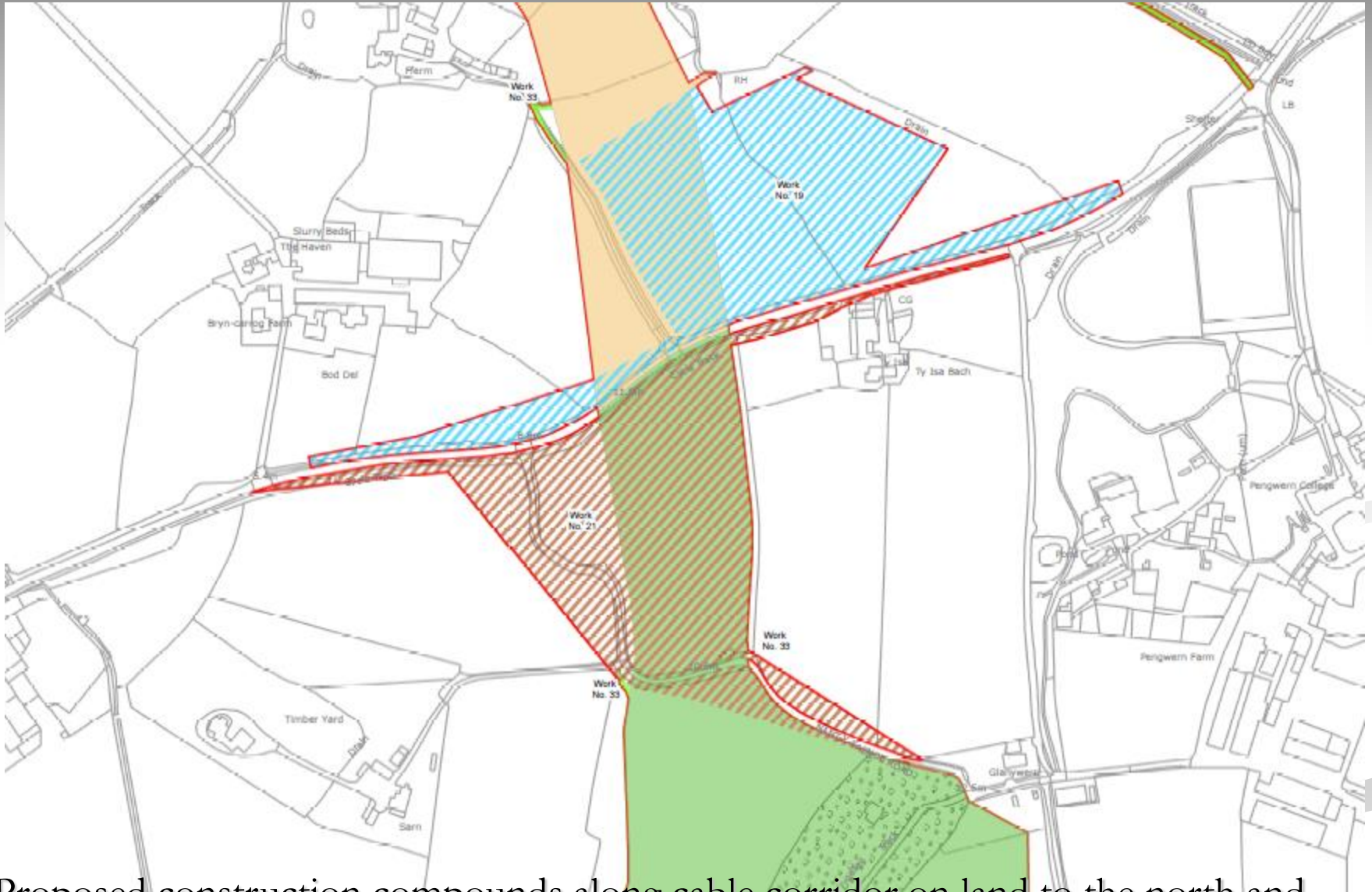
Proposed construction compound along cable corridor on land at to south of Clwyd Retail Park, Rhuddlan

Eitem Agenda 8 / Agenda Item 8



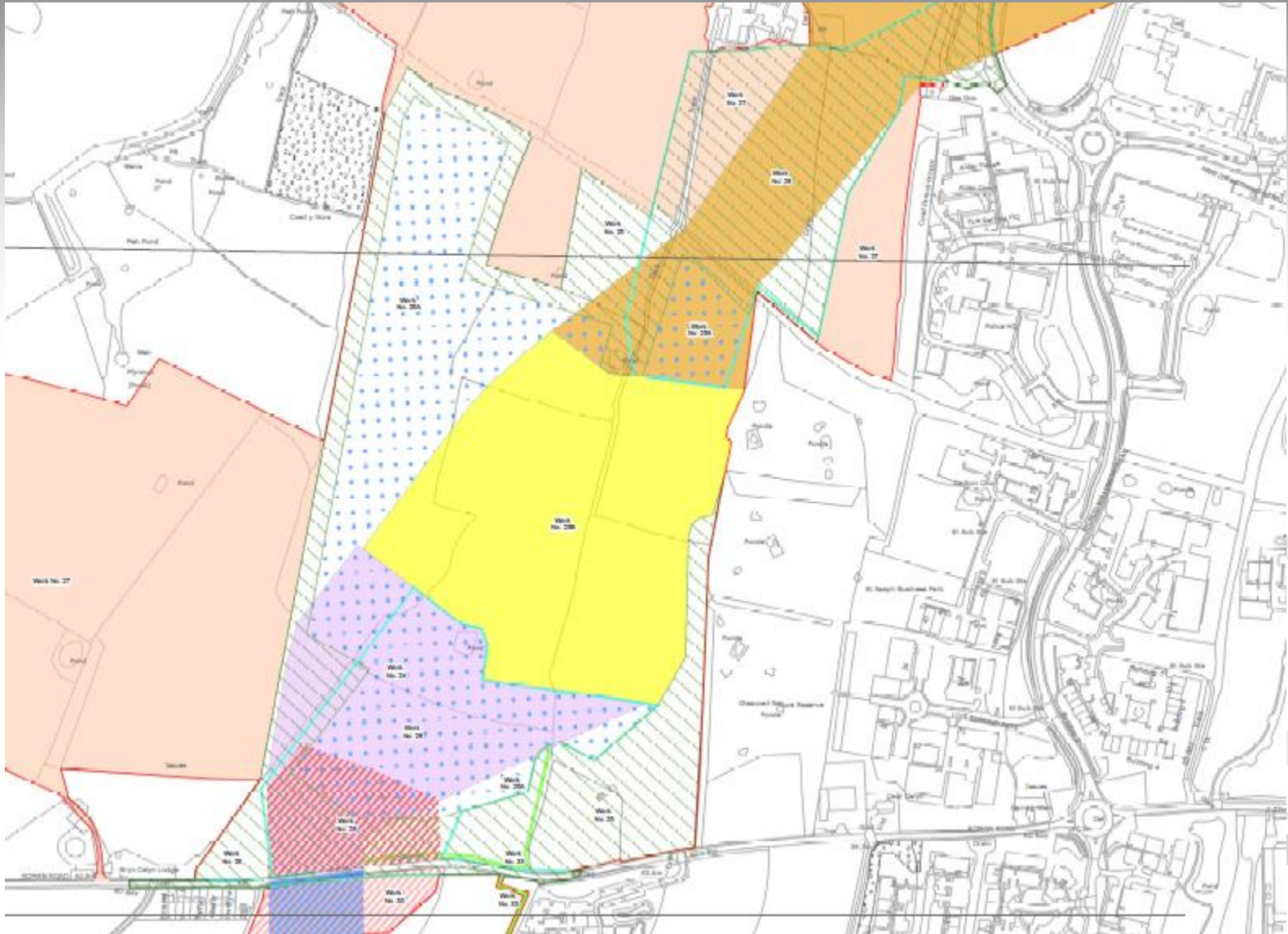
Proposed construction compound along cable corridor on land at to land to south of A547 Abergele Road, Rhuddlan

Eitem Agenda 8 / Agenda Item 8



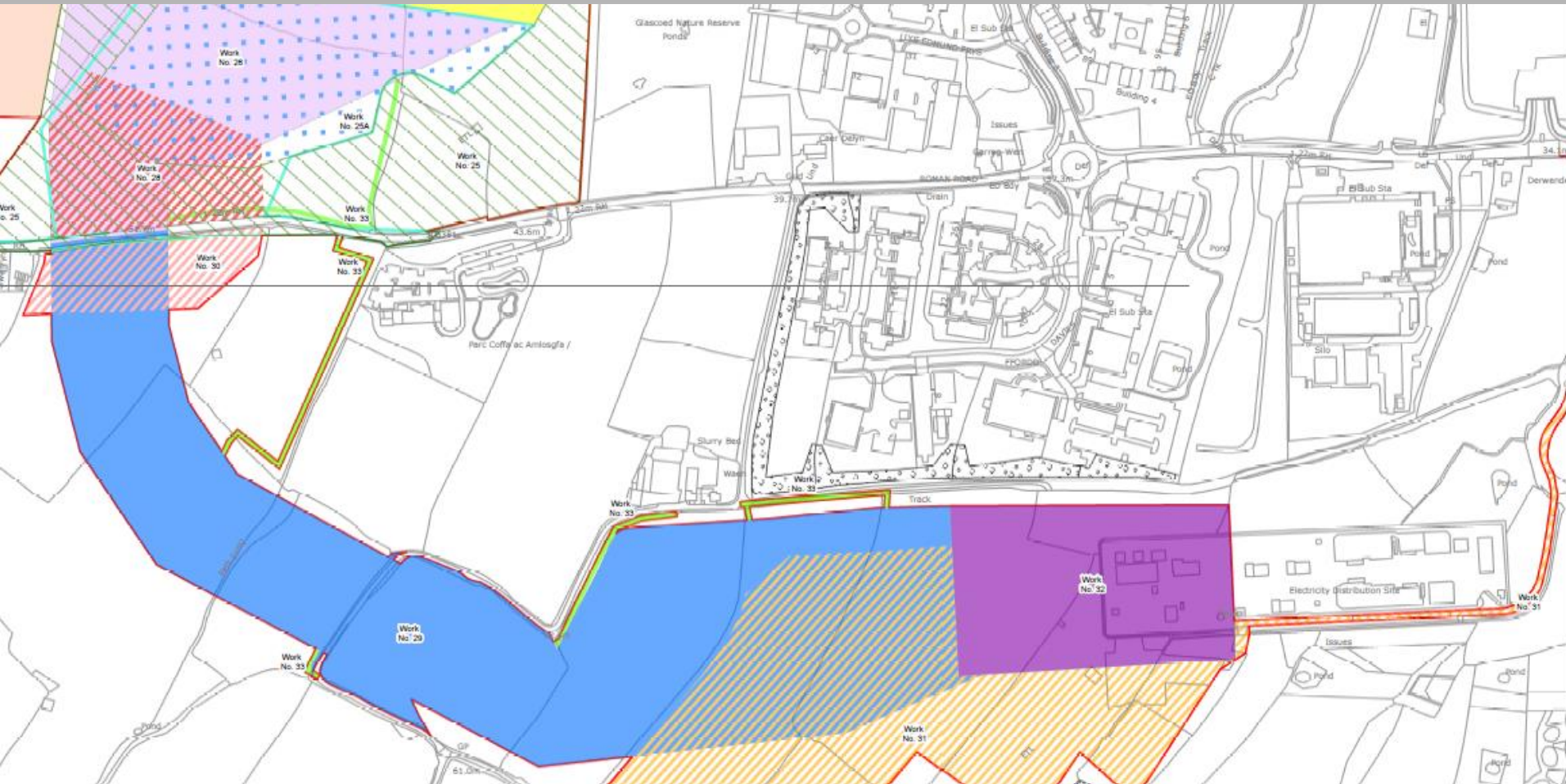
Proposed construction compounds along cable corridor on land to the north and south of road, to north-east of Glan Clwyd hospital, Bodelwyddan

Eitem Agenda 8 / Agenda Item 8



Proposed construction compound and substation site, land to west of St Asaph business park

Eitem Agenda 8 / Agenda Item 8



Proposed cable route to connect to National Grid substation, land to south of St Asaph Business Park